

Rolfe East



The Grove, Ealing, W5 5LL

£2,250 pcm

- Two bedroom apartment
- Just re-decorated
- Unfurnished
- Available 8th December 2025
- Arranged over two floors
- 7 minutes walk to Ealing Broadway Station
- Gas central heating and double glazing
- EPC rating: D / council tax band: D

Flat 3, 77 The Grove, Ealing W5 5LL

Just minutes walk from Ealing Broadway station and nestled within the heart of 'The Grove' conservation area is this bright and spacious two bedroom apartment with accommodation arranged over two floors. The property has just undergone full redecoration and has recently been double glazed.

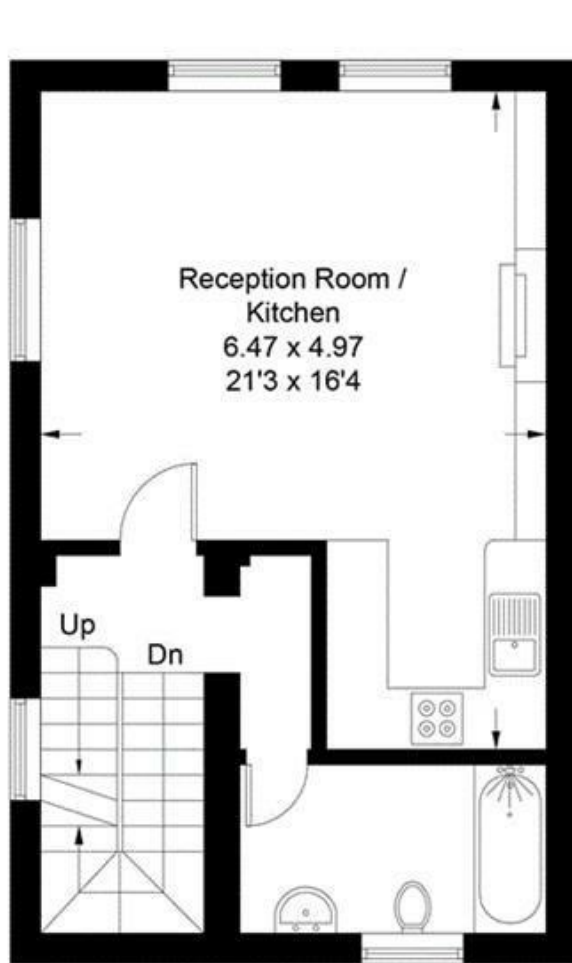


Council Tax Band: D

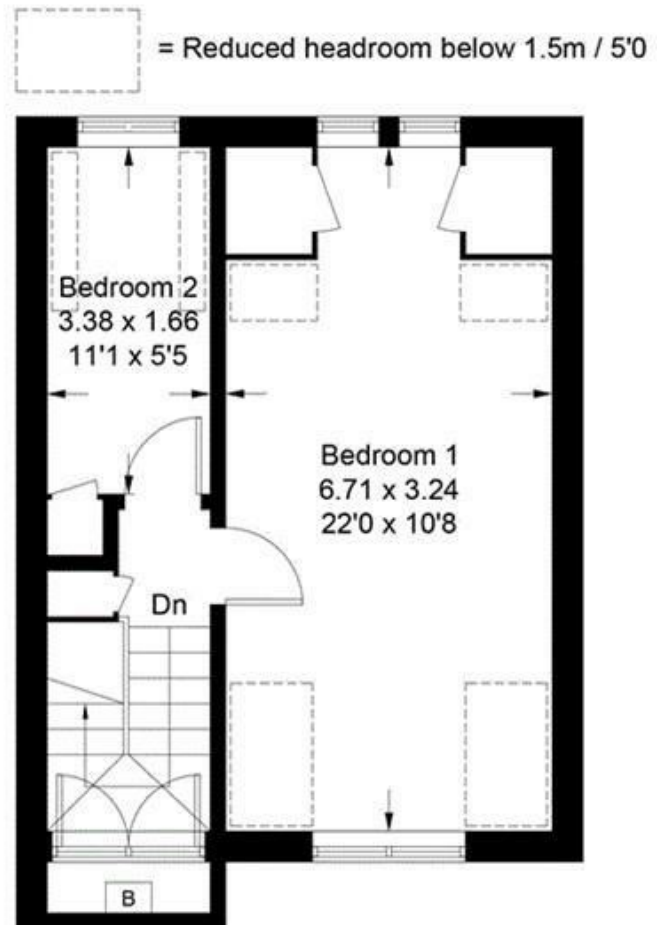


Flat 3, The Grove

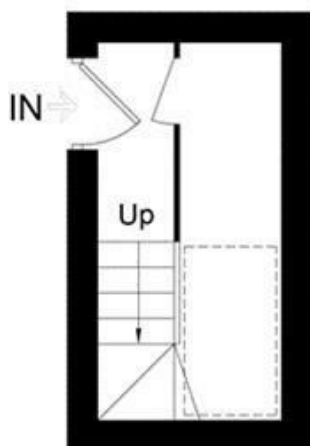
Approximate Gross Internal Area = 82.1 sq m / 884 sq ft



First Floor

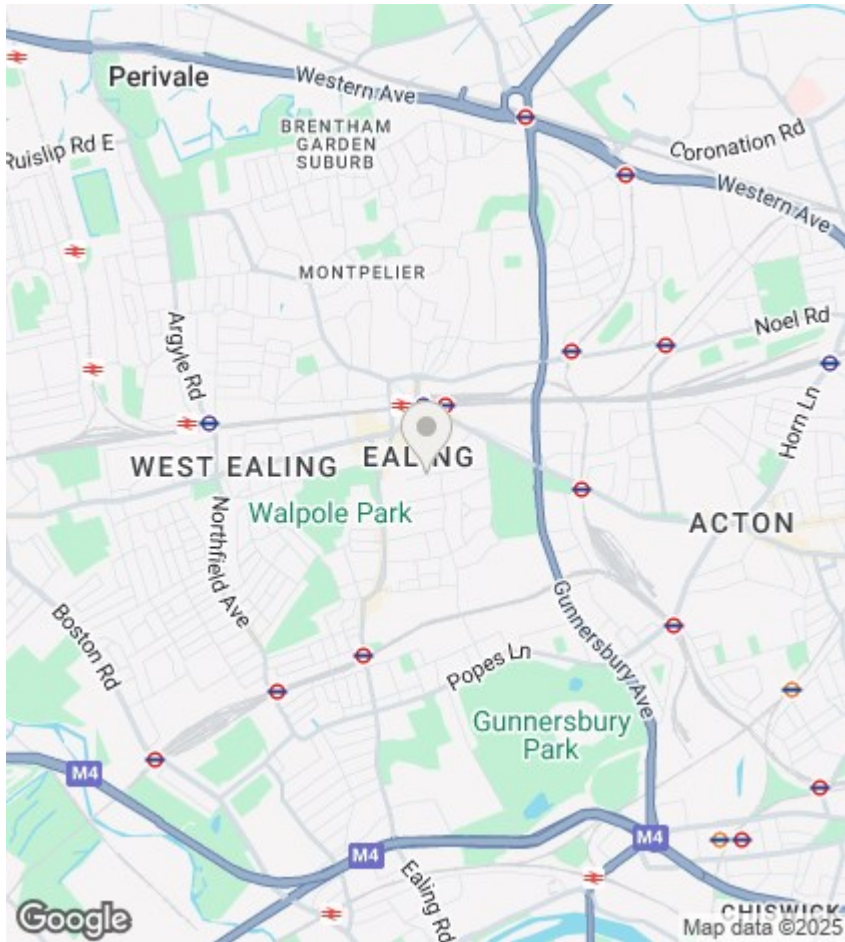


Second Floor



Ground Floor

Illustration for identification purposes only,
measurements are approximate, not to scale. (ID1042499)



Directions

Viewings

Viewings by arrangement only. Call 020 8840 7707 to make an appointment.

EPC Rating:

D

Energy Efficiency Rating		
	Current	Potential
Very energy efficient - lower running costs		
(92 plus) A		
(81-91) B		
(69-80) C		
(55-68) D		
(39-54) E	55	74
(21-38) F		
(1-20) G		
Not energy efficient - higher running costs		
England & Wales		EU Directive 2002/91/EC